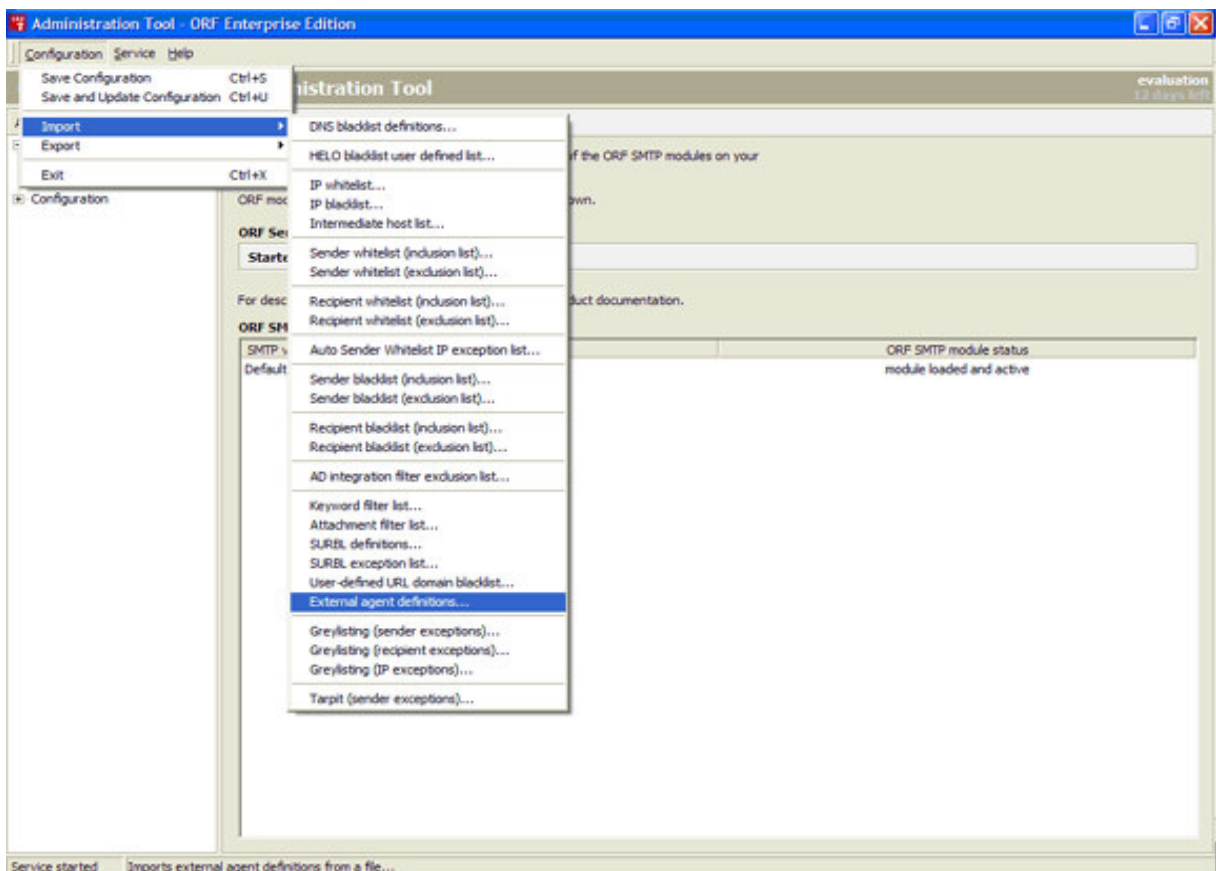
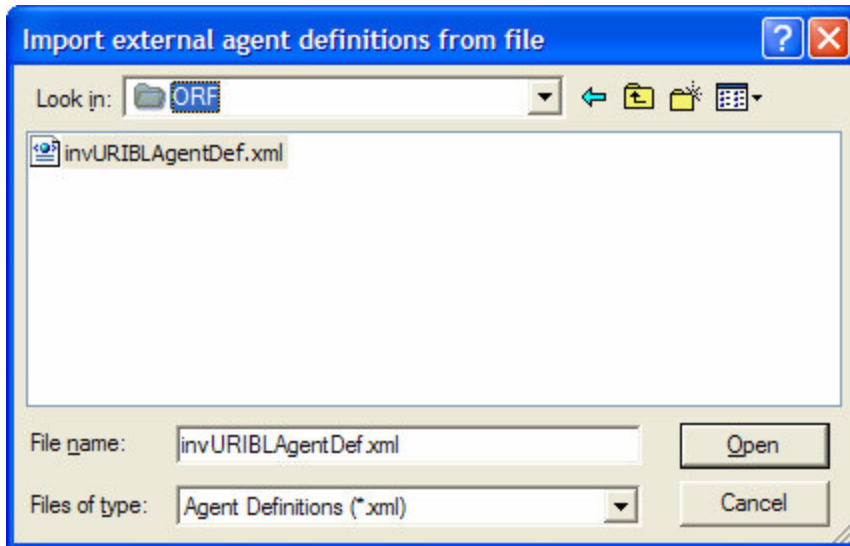


Installing invURIBL into ORF

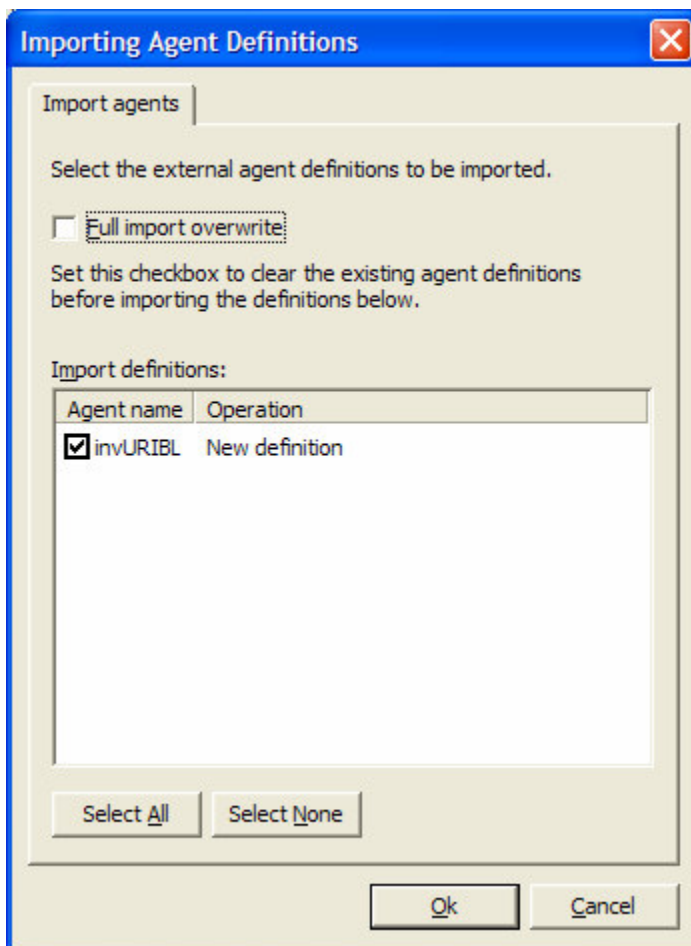
1. To install invURIBL into ORF you will need to make sure you download the latest invURIBL package from <http://www.invariantsystems.com>
2. Unzip the invURIBL download into a folder on your system.
3. Follow the instructions in the README-BEFORE-USE.TXT file. This will ensure that the basic functionality of invURIBL is working prior to integrating the software into ORF.
4. If you encountered no errors in the previous steps please follow the next set of instructions to configure invURIBL to run with ORF.
5. Open the “Administration Tool” for ORF.
6. Select Configuration | Import | External Agent Definitions



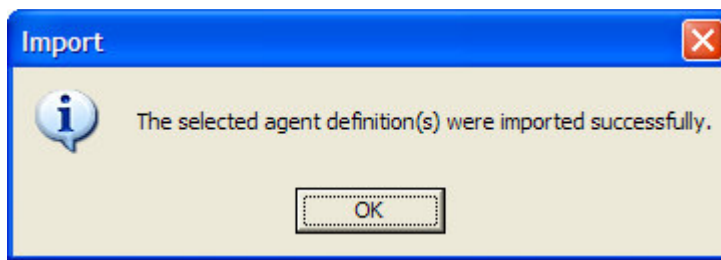
7. Browse to the path where the invURIBL ORF external agent definition resides. Select the invURIBLAgentDef.xml agent definition file in the file dialog.



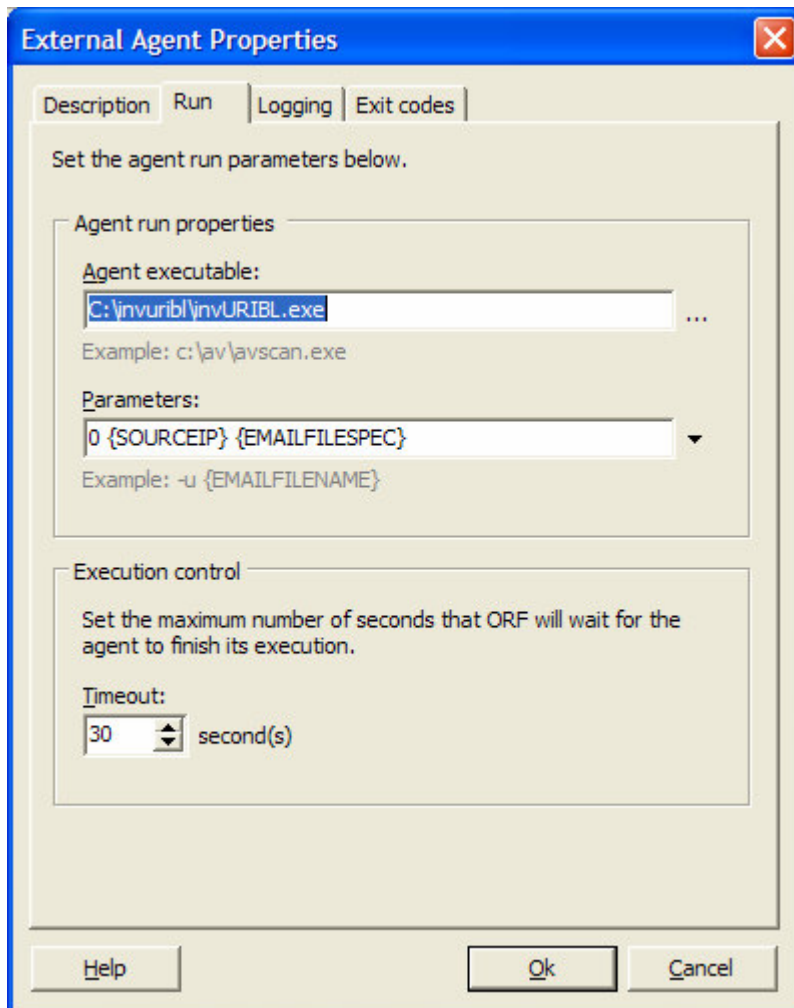
8. Click the open button



9. You should receive a message indicating that the agent was successfully imported.

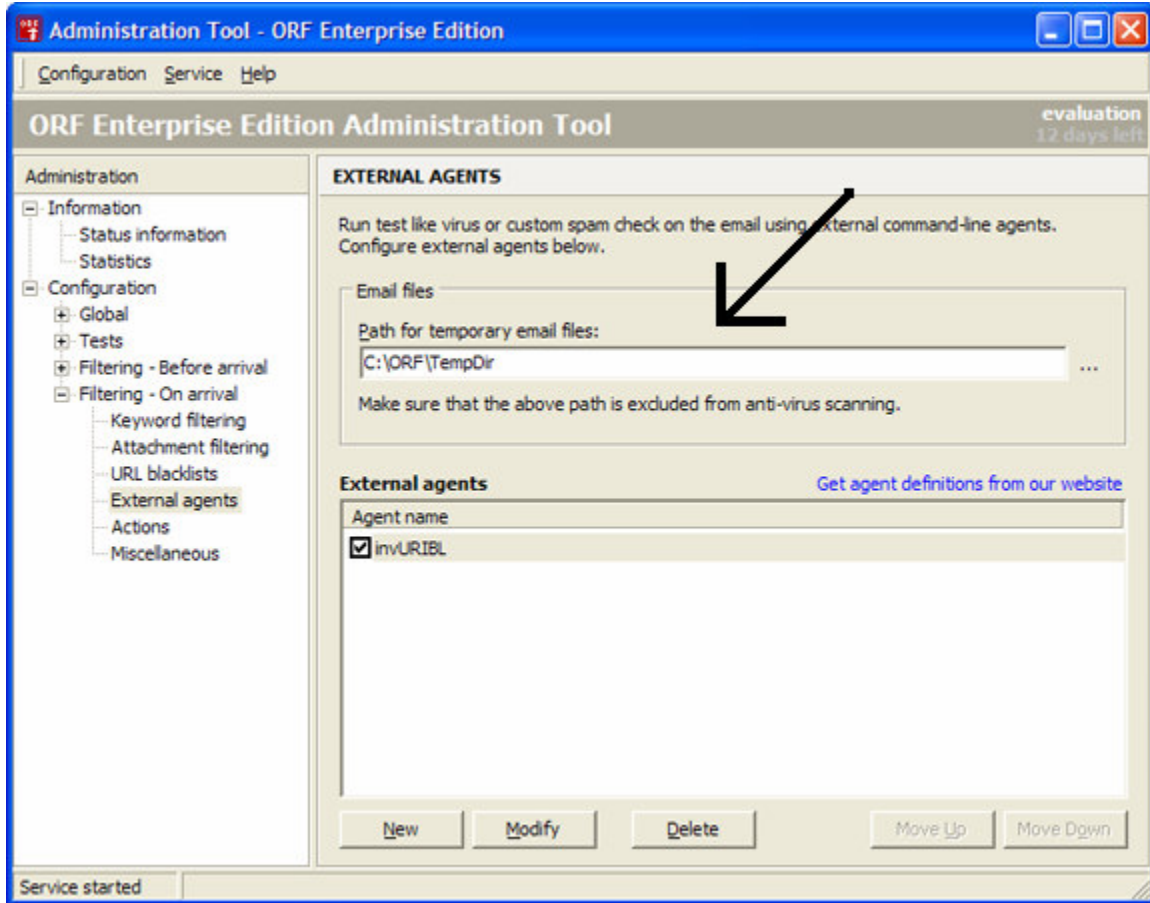


10. We will now need to edit the agent so that we can specify the path to where we have the executable installed on our system.
11. Expand Configuration | Filtering – On Arrival | External Agents
12. Highlight invURIBL and click Modify
13. Select the Run tab.
14. Modify the Agent Executable Path to the location where invURIBL.exe resides on your system. Do not modify any of the options in the parameters edit box.



15. After modifying the executable path select OK.

16. You will also need to add a path where ORF can process the files.



17. Save the configuration by Configuration | Save and Update Configuration

18. At this time invURIBL has been integrated into ORF. Please review the invURIBL and ORF logs for any errors.

19. You may also want to modify the scoring structure. Currently the agent is configured to tag the header of the message if invURIBL returns a weight between 1–5. Tag the subject line if invURIBL returns a weight between 6-9 and block the message if the returned weight is 10+.

20. If you have any questions or need any assistance please contact us at support [at] invariantssystems.com